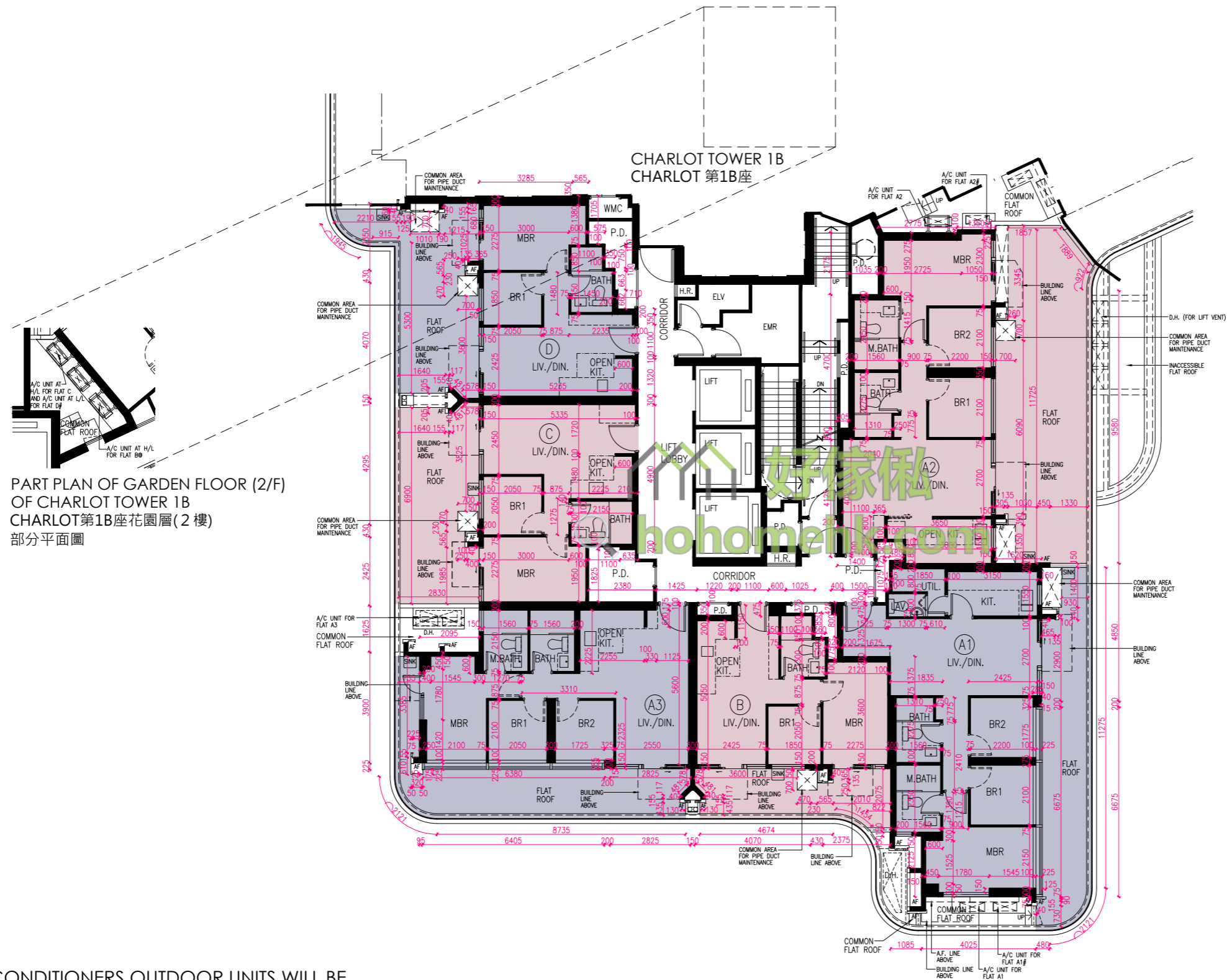


# FLOOR PLANS OF RESIDENTIAL PROPERTIES IN THE PHASE 期數的住宅物業的樓面平面圖

## CHARLOT TOWER 1A GARDEN FLOOR (2/F) | CHARLOT 第1A座 花園層 (2樓)



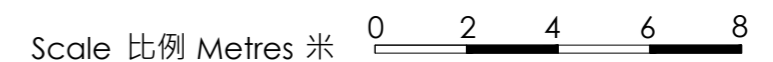
PART PLAN OF GARDEN FLOOR (2/F) OF CHARLOT TOWER 1B CHARLOT 第1B座花園層 (2樓) 部分平面圖

@ THREE AIR-CONDITIONERS OUTDOOR UNITS WILL BE INSTALLED WITH A TRIPLE DECK SYSTEM

@ 三部冷氣機室外機將會以三層系統型式安裝

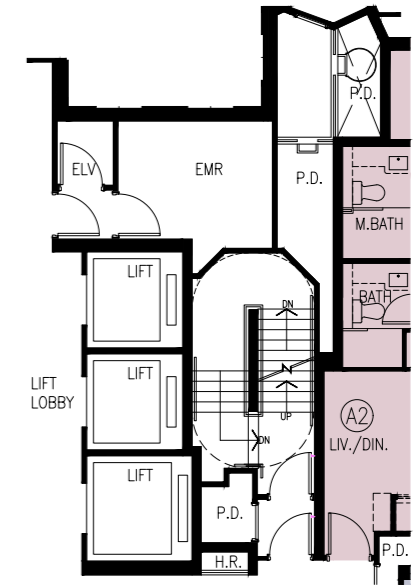
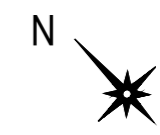
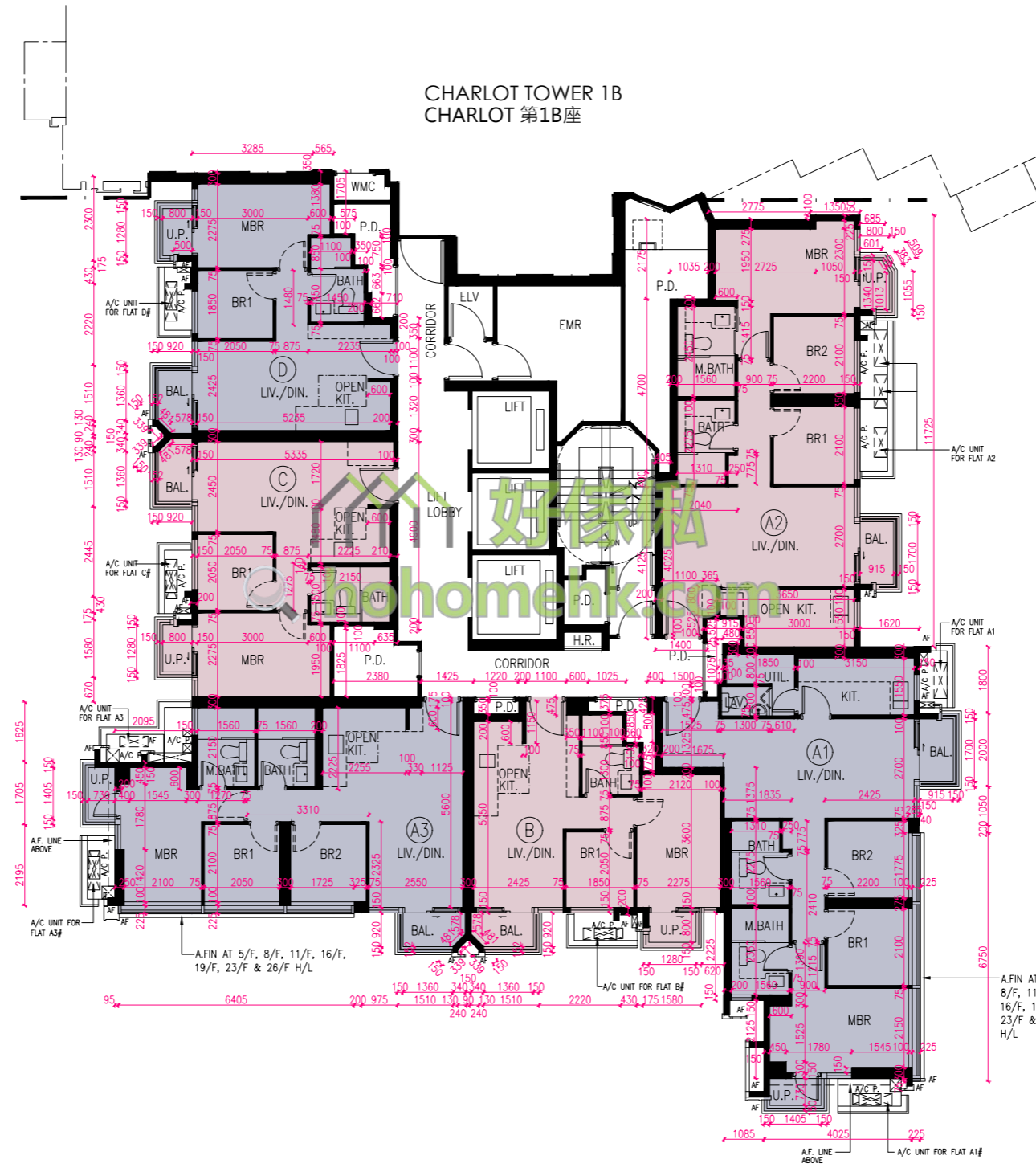
# TWO AIR-CONDITIONERS OUTDOOR UNITS WILL BE INSTALLED WITH A DOUBLE DECK SYSTEM

# 兩部冷氣機室外機將會以雙層系統型式安裝



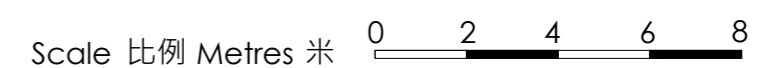
# FLOOR PLANS OF RESIDENTIAL PROPERTIES IN THE PHASE 期數的住宅物業的樓面平面圖

CHARLOT TOWER 1A 3/F, 5/F-12/F, 15/F-18/F, 20/F-23/F & 25/F-28/F | CHARLOT 第1A座 3樓、5樓至12樓、15樓至18樓、20樓至23樓及25樓至28樓



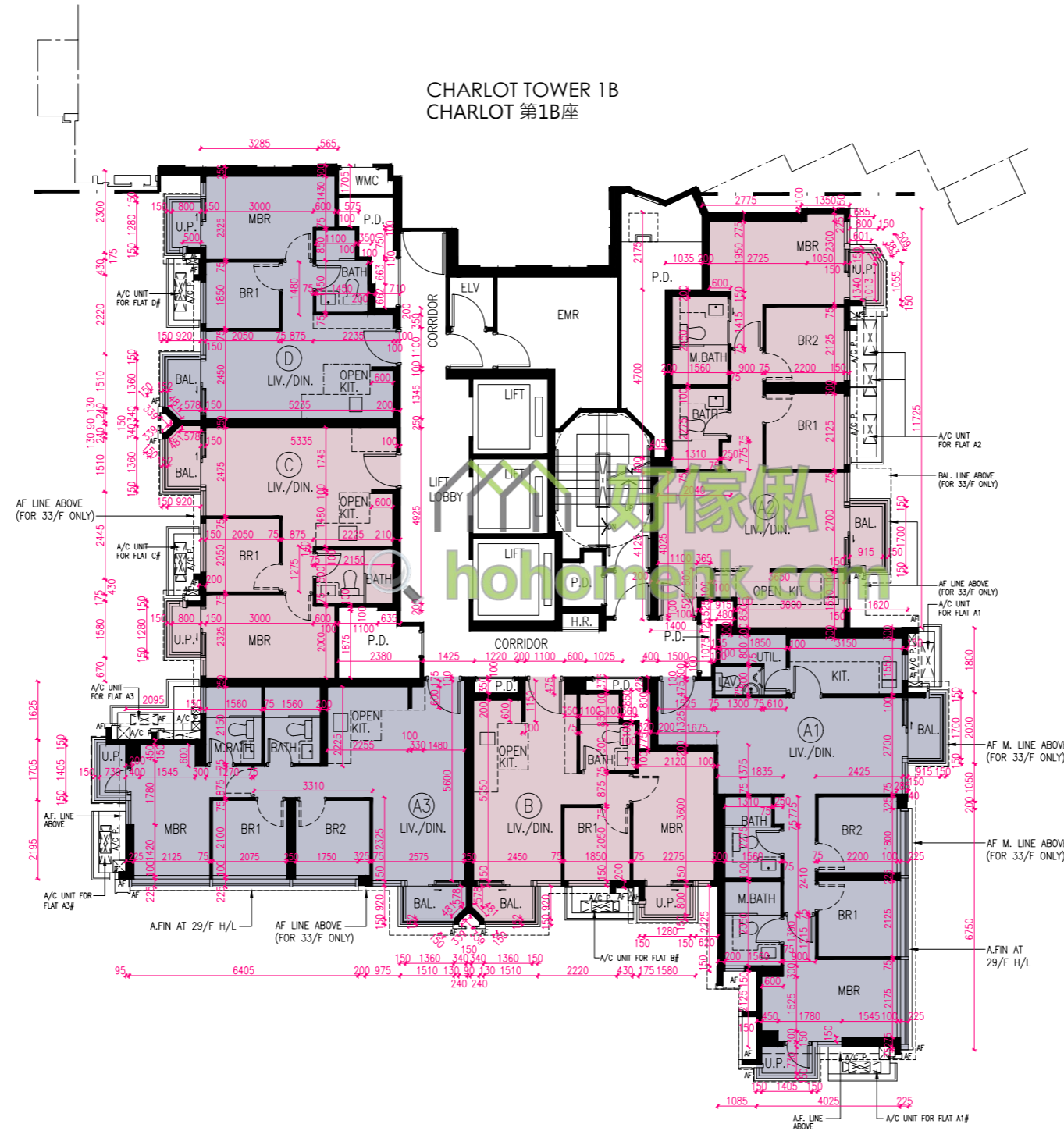
PART PLAN OF STAIRCASE AT 3/F  
3樓樓梯部分平面圖

# TWO AIR-CONDITIONERS OUTDOOR UNITS WILL BE INSTALLED WITH A DOUBLE DECK SYSTEM  
# 兩部冷氣機室外機將會以雙層系統型式安裝

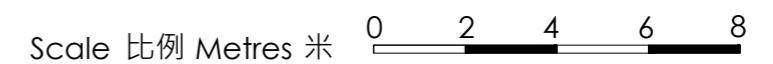


# FLOOR PLANS OF RESIDENTIAL PROPERTIES IN THE PHASE 期數的住宅物業的樓面平面圖

CHARLOT TOWER 1A 29/F-33/F | CHARLOT 第1A座 29樓至33樓



# TWO AIR-CONDITIONERS OUTDOOR UNITS WILL BE INSTALLED WITH A DOUBLE DECK SYSTEM  
 # 兩部冷氣機室外機將會以雙層系統型式安裝



# FLOOR PLANS OF RESIDENTIAL PROPERTIES IN THE PHASE 期數的住宅物業的樓面平面圖

CHARLOT TOWER 1A PENTHOUSE (35/F) | CHARLOT 第1A座 頂層(35樓)

