



# C座標準樓層平面圖(2樓至39樓)

## BLOCK C TYPICAL FLOOR PLAN (2/F-39/F)

### 圖例 NOTATION

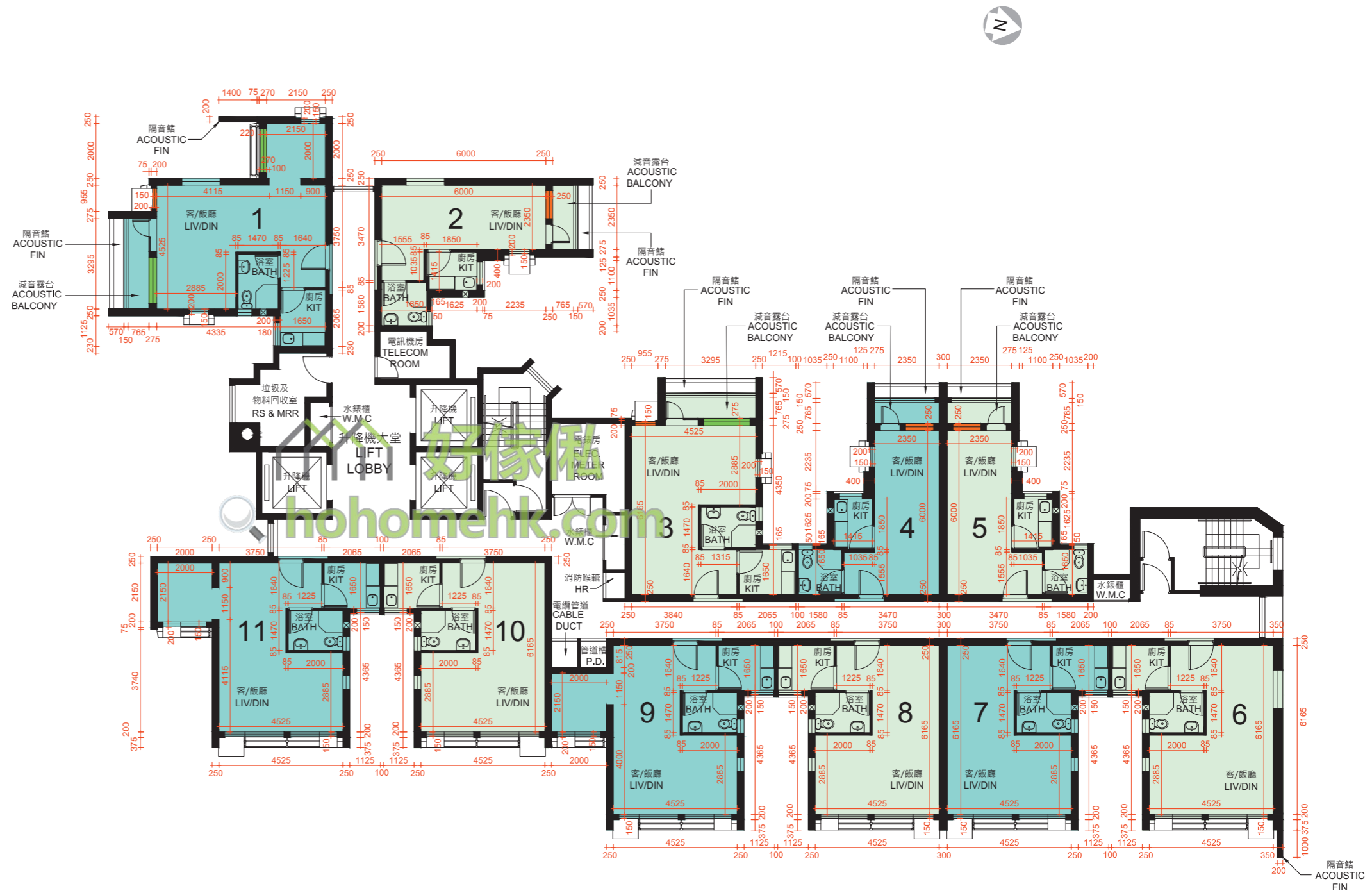
BATH	浴室	Bathroom
HR	消防喉轆	Hose Reel
KIT	廚房	Kitchen
LIV/DIN	客/飯廳	Living/Dining Room
RS & MRR	垃圾及物料回收室	Refuse Storage and Material Recovery Room
TELECOM ROOM	電訊機房	Telecommunications Room
ELEC. METER ROOM	電錶房	Electrical Meter Room
W.M.C.	水錶櫃	Water Meter Cupboard
P.D.	管道槽	Pipe Duct
	減音窗	Acoustic Window
	固定窗	Fixed Window

### 註:

1. 平面圖所列之數字為以毫米標示之建築結構尺寸。
2. 每個住宅物業的層與層之間的高度為2.75米(39樓除外)。
3. 2樓至39樓每個住宅物業的層與層之間的高度為2.79米。
4. 2樓至38樓每個住宅物業的樓板(不包括灰泥)的厚度為160毫米及215毫米(1、2、3、4及5號單位除外)。
5. 2樓至38樓1、2、3、4及5號單位的住宅物業的樓板(不包括灰泥)的厚度為130毫米、160毫米及215毫米。
6. 39樓每個住宅物業的樓板(不包括灰泥)的厚度為200毫米(1、2、3、4及5號單位除外)。
7. 39樓1、2、3、4及5號單位住宅物業的樓板(不包括灰泥)的厚度為200毫米及450毫米。
8. 大廈設有3部升降機。每個住宅樓層均有2部升降機到達。
9. 為減低道路交通噪音的影響，部分單位將設有減音露台、減音窗及固定窗。

### Notes:

1. The dimensions on the floor plan are all structural dimensions in millimetre.
2. The floor-to-floor height of each residential property is 2.75m (except 39/F). The floor-to-floor height of each residential property on 39/F is 2.79m.
3. The thicknesses of the floor slabs (excluding plaster) of each residential property on 2/F to 38/F are 160mm and 215mm (except Flats 1, 2, 3, 4 and 5). The thicknesses of the floor slabs (excluding plaster) of Flats 1, 2, 3, 4 and 5 on 2/F to 38/F are 130mm, 160mm and 215mm. The thickness of the floor slab (excluding plaster) of each residential property on 39/F is 200mm (except Flats 1, 2, 3, 4 and 5). The thicknesses of the floor slabs (excluding plaster) of Flats 1, 2, 3, 4 and 5 on 39/F are 200mm and 450mm.
4. There are 3 lifts in the building. Each residential floor is served by 2 lifts.
5. In order to mitigate the impact of road traffic noise, acoustic balconies, acoustic windows and fixed windows are provided in some flats.



比例尺 SCALE: 0 5 (米) (m)