

11

FLOOR PLANS OF RESIDENTIAL PROPERTIES IN THE PHASE

期數的住宅物業的樓面平面圖

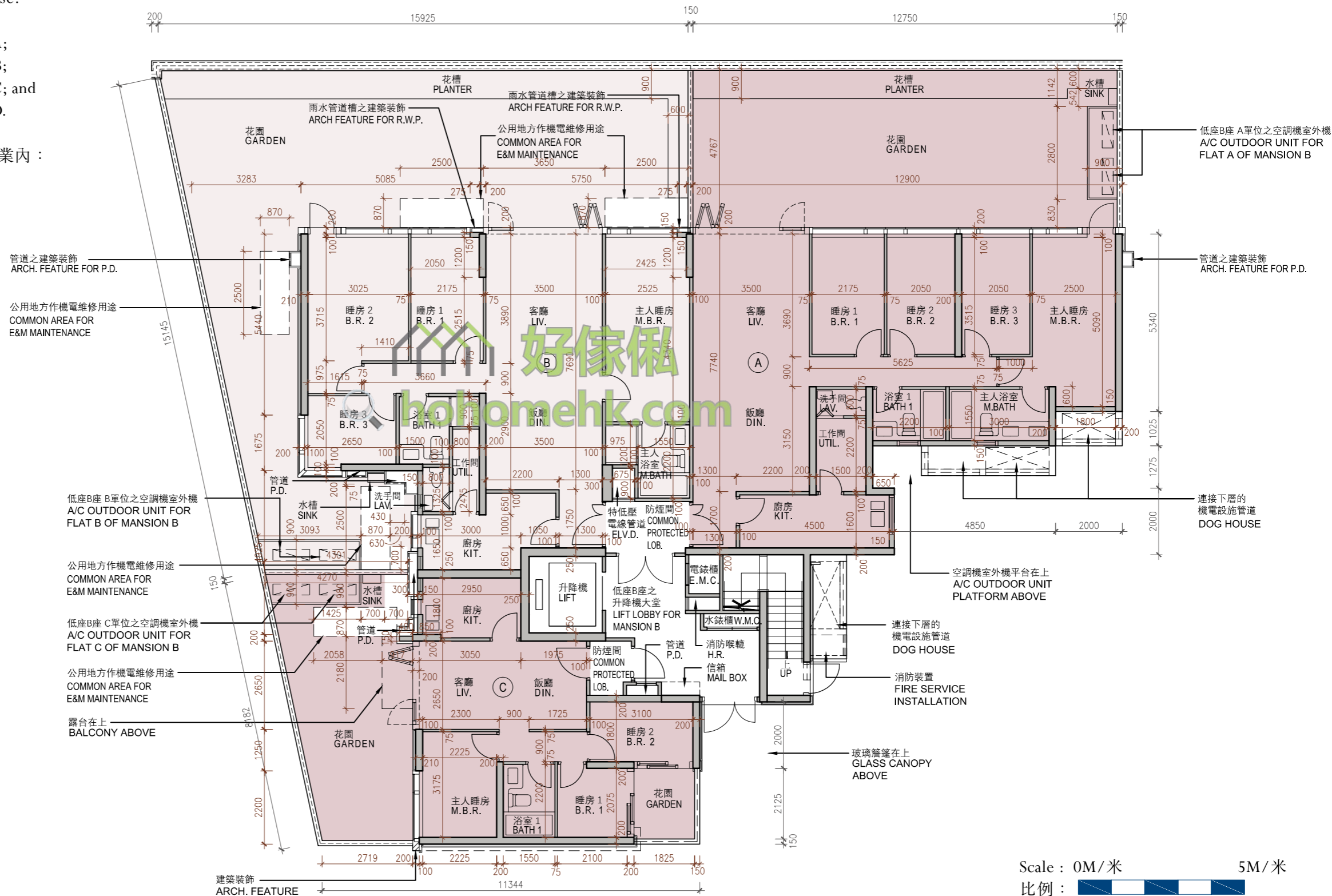
Mansion B G/F 低座B座 地下

Certain common area(s) are located within the following residential units of the Phase:

- (i) Flat A on G/F and 1/F of Tower 1A;
- (ii) Flat A and Flat C on G/F of Mansion A;
- (iii) Flat B and Flat C on G/F of Mansion B;
- (iv) Flat A and Flat B on G/F of Mansion C; and
- (v) Flat A and Flat B on G/F of Mansion D.

某些公用地方位於下述期數中的住宅物業內：

- (i) 第1A座地下及1樓A單位；
- (ii) 低座A座地下A單位及C單位；
- (iii) 低座B座地下B單位及C單位；
- (iv) 低座C座地下A單位及B單位；及
- (v) 低座D座地下A單位及B單位。

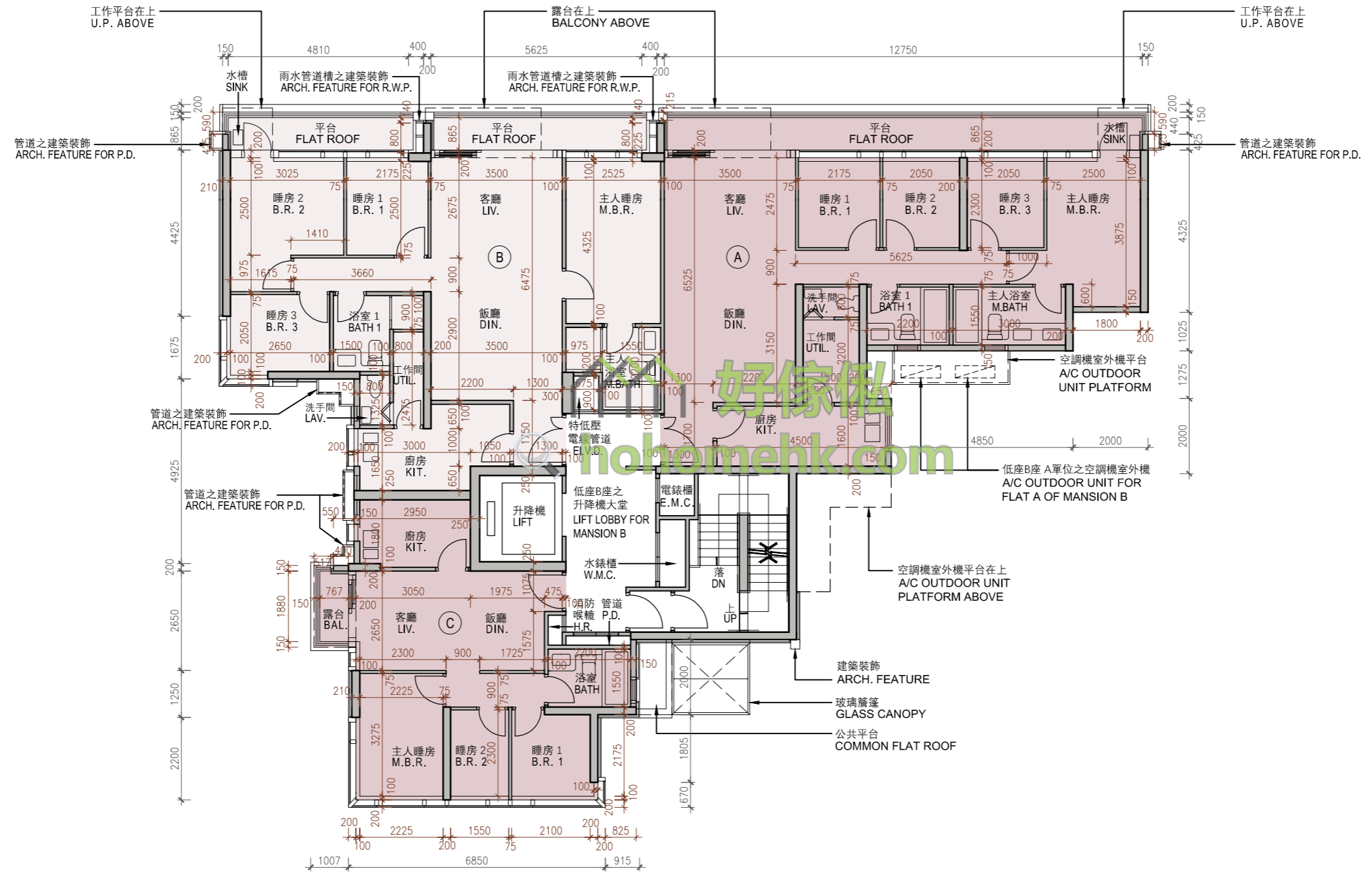


11

FLOOR PLANS OF RESIDENTIAL PROPERTIES IN THE PHASE 期數的住宅物業的樓面平面圖

Mansion B
低座B座

1/F
1樓



Scale : 0M/米 5M/米
比例 :

11

FLOOR PLANS OF RESIDENTIAL PROPERTIES IN THE PHASE

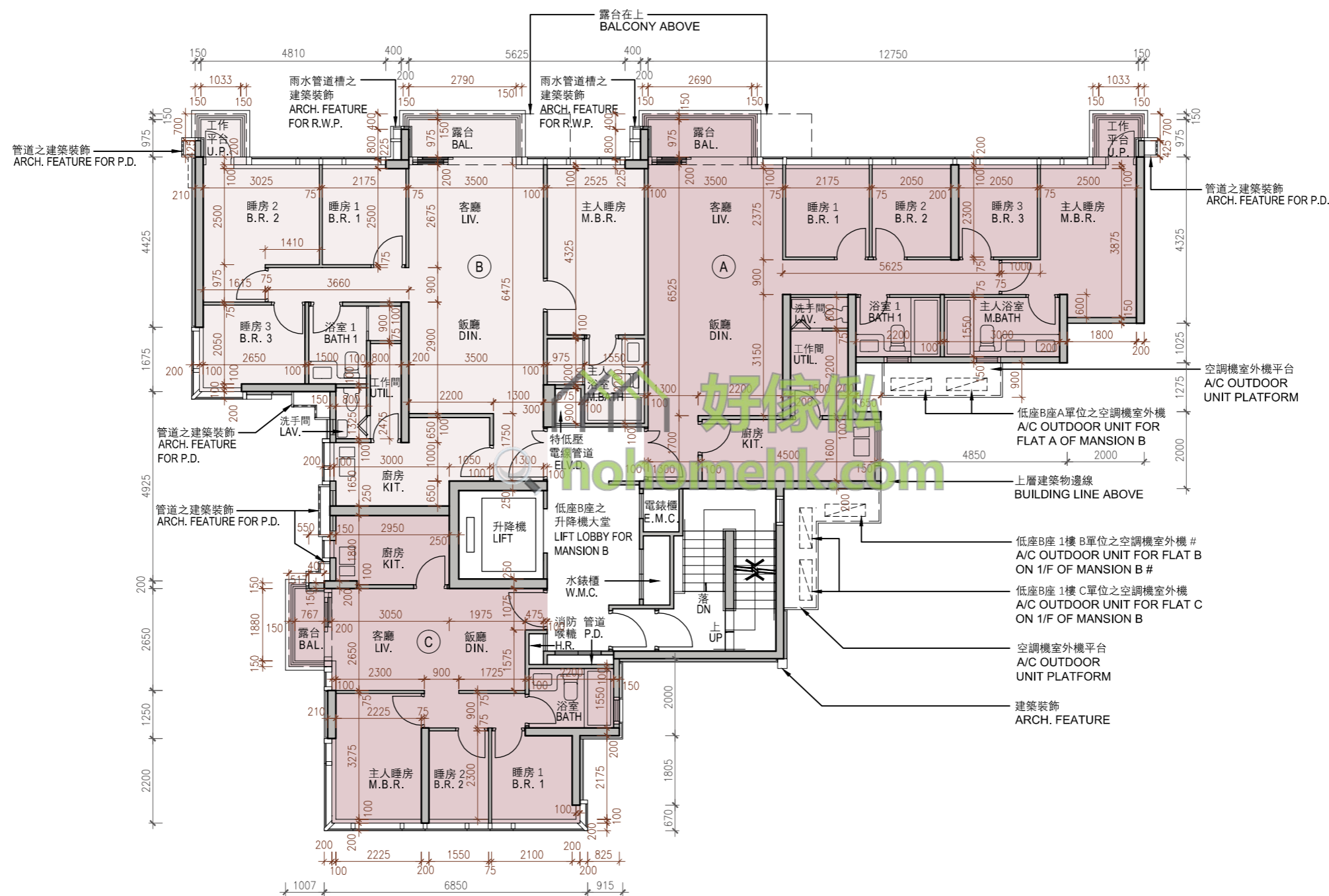
期數的住宅物業的樓面平面圖

Mansion B

2/F

低座B座

2樓



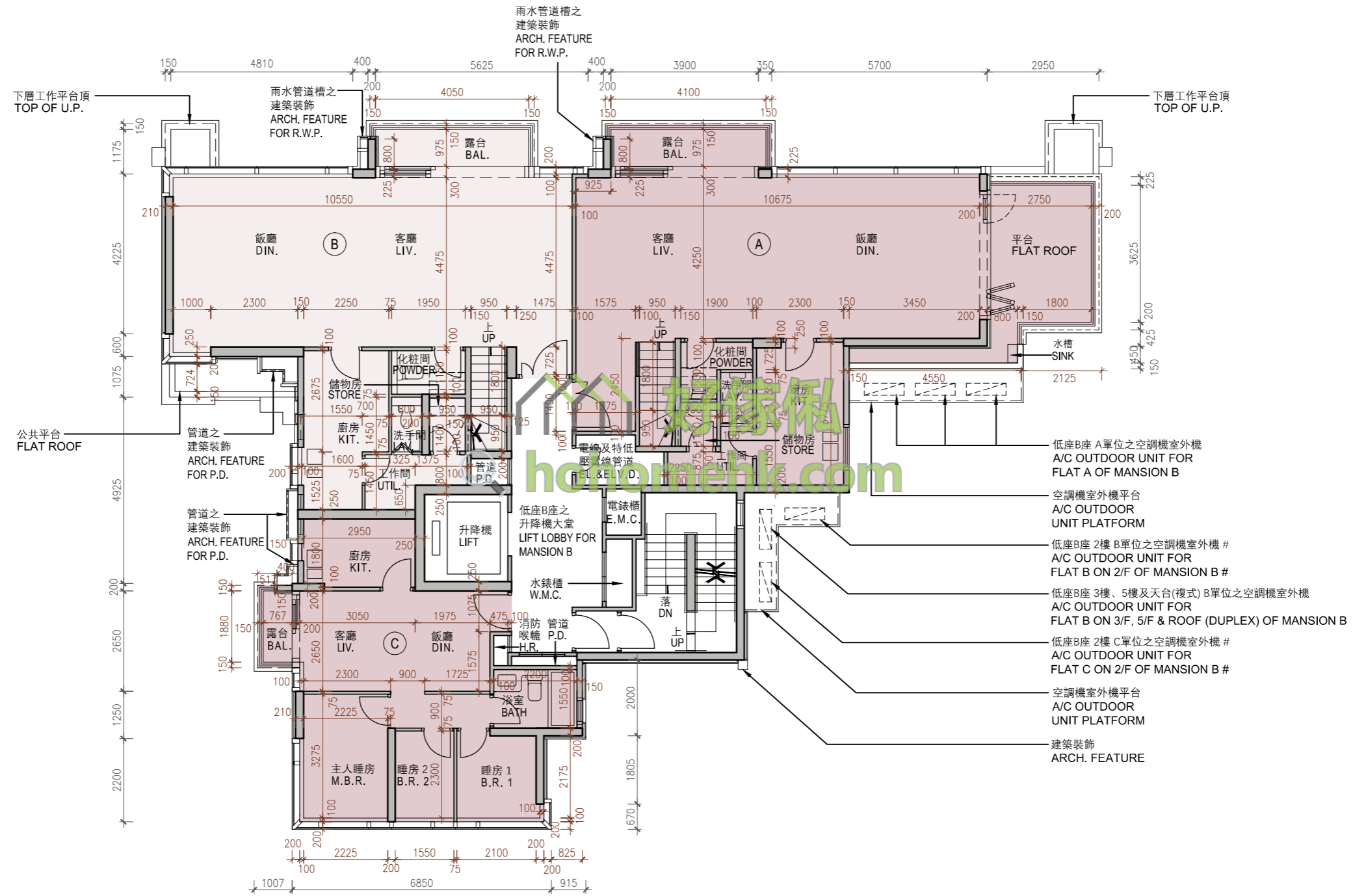
TWO AIR-CONDITIONING OUTDOOR UNITS WILL BE INSTALLED WITH A DOUBLE DECK SYSTEM
兩部空調機室外機將會以雙層系統形式安裝

Scale : 0M/米 5M/米
比例 :

11 FLOOR PLANS OF RESIDENTIAL PROPERTIES IN THE PHASE

期數的住宅物業的樓面平面圖

Mansion B 3/F
低座B座 3樓



TWO AIR-CONDITIONING OUTDOOR UNITS WILL BE INSTALLED WITH A DOUBLE DECK SYSTEM
兩部空調機室外機將會以雙層系統形式安裝

Scale : 0M / 米 5M / 米
比例 :

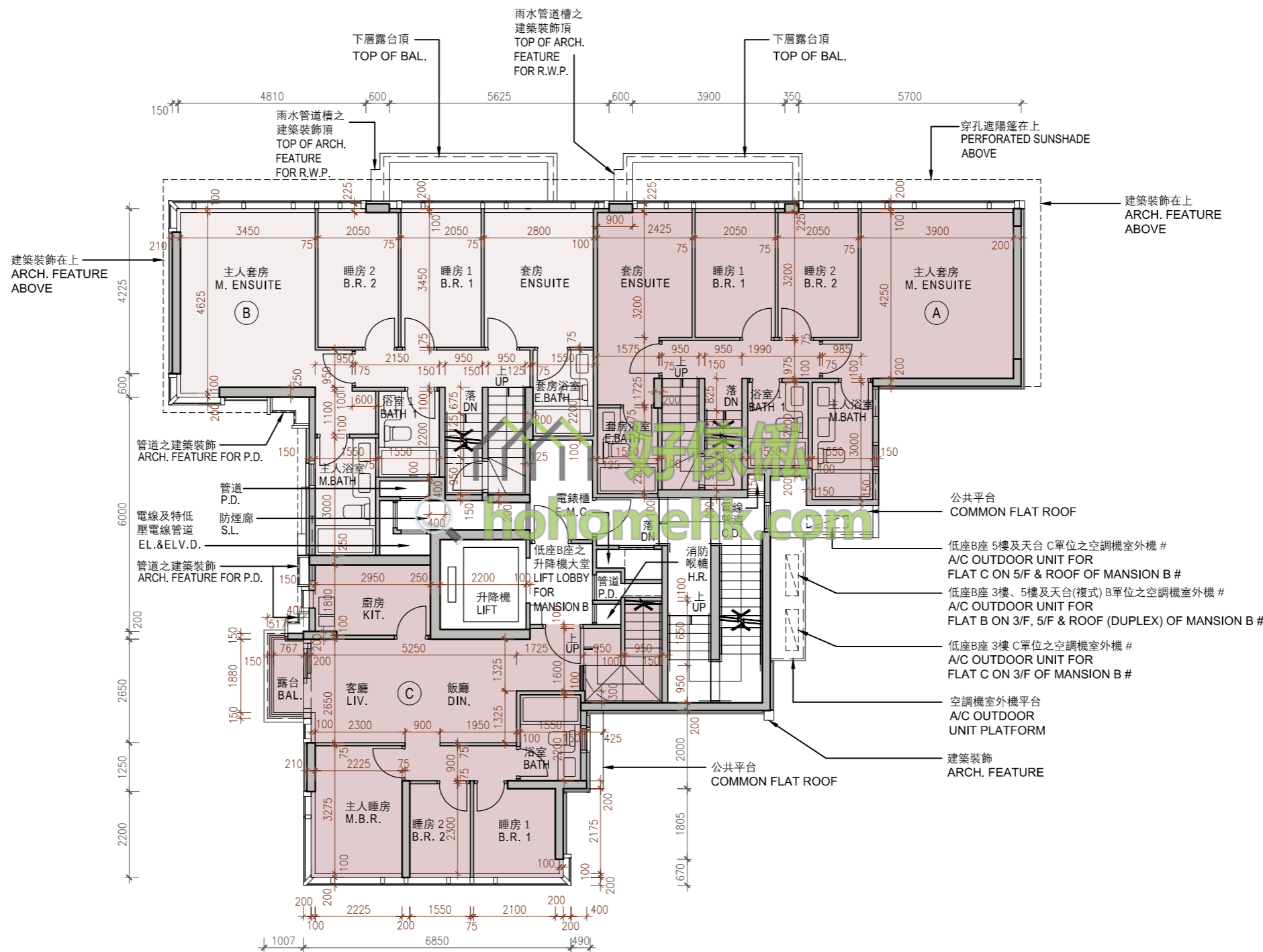
11

FLOOR PLANS OF RESIDENTIAL PROPERTIES IN THE PHASE

期數的住宅物業的樓面平面圖

Mansion B
低座B座

5/F
5樓



TWO AIR-CONDITIONING OUTDOOR UNITS WILL BE INSTALLED WITH A DOUBLE DECK SYSTEM
兩部空調機室外機將會以雙層系統形式安裝

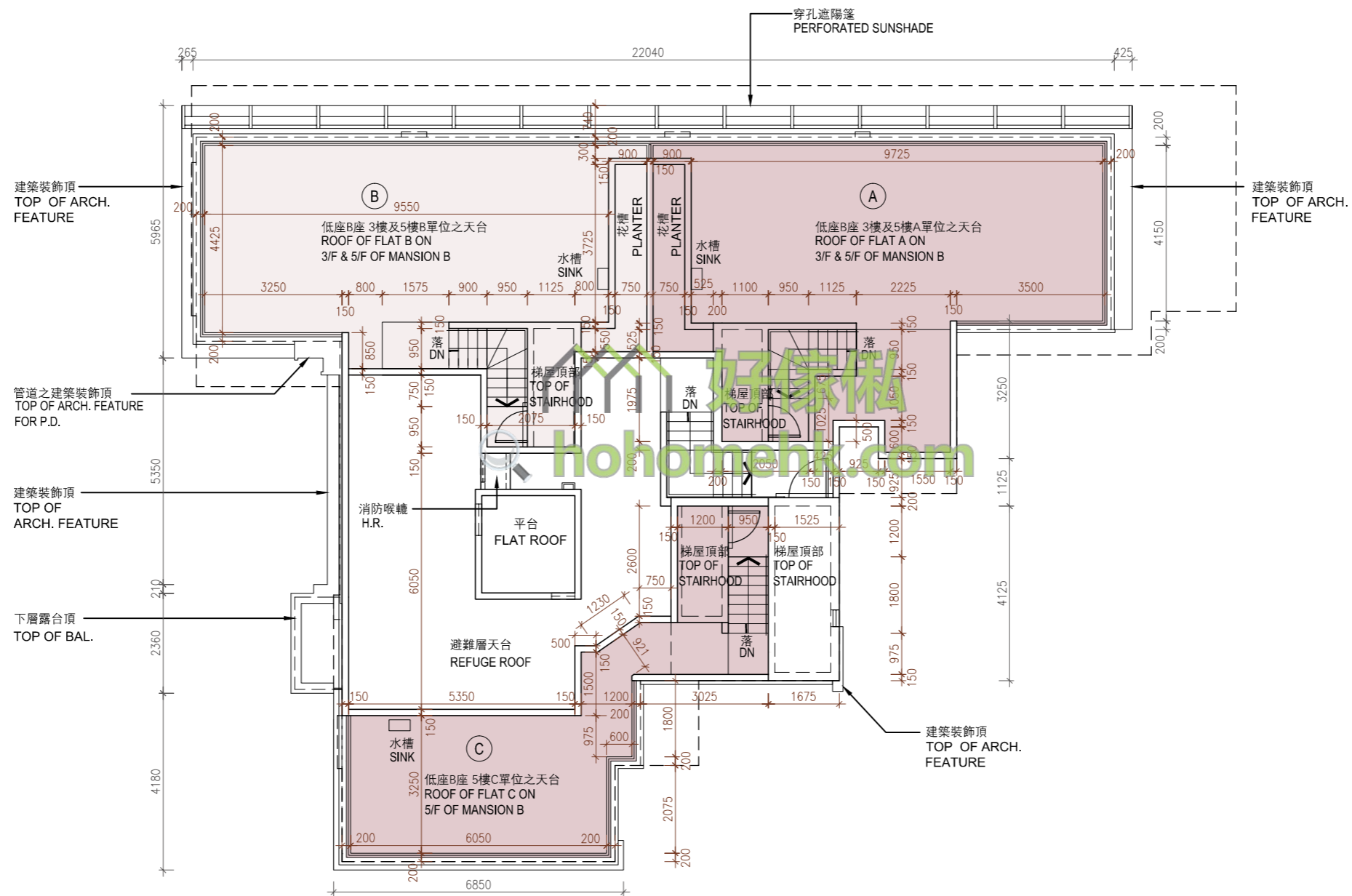
Scale : 0M/米 5M/米
比例 :

11

FLOOR PLANS OF RESIDENTIAL PROPERTIES IN THE PHASE 期數的住宅物業的樓面平面圖

Mansion B
低座B座

Roof
天台



Scale : 0M/米 5M/米
比例 :